



Liverpool Road

Southport, PR8 3BZ

£20,000

***AVAILABLE TO LET EXCLUSIVELY FOR THE ROYAL BIRKDALE GOLF OPEN 2026**

PRICE ON APPLICATION

Flexi-Agent are delighted to present this impressive double-fronted, five-bedroom semi-detached property, available to let for The Royal Birkdale Golf Open 2026. Ideally positioned on Liverpool Road, the property is located close to Birkdale Village, offering a wide range of local amenities including shops, bars, and restaurants.

The property is conveniently situated just 1.4 miles from Royal Birkdale Golf Club, and is also within close proximity to other renowned courses such as Hillside Golf Club and Southport Golf Links, making it an ideal base for golf enthusiasts. Excellent transport links are nearby.

This substantial property briefly comprises a double-height entrance hallway with a feature fireplace and galleried landing, an open-plan lounge/dining room with a bay window to the front, a spacious shaker-style fitted kitchen/diner, an additional reception/family room adjoining the kitchen, a separate utility room, and a downstairs WC.

To the first floor, the property offers four generous double bedrooms, an additional single bedroom or home office, a modern and fully tiled four-piece family bathroom featuring a freestanding bathtub and walk-in shower, along with a separate WC.

Viewing

Please contact our Flexi-Agent Southport Lettings Office on 01704 889455 if you wish to arrange a viewing appointment for this property or require further information.

- Five bedrooms
- Substantial double fronted semi-detached
- Sought after Birkdale location
- 1.4 miles away from the Royal Birkdale Golf Club
- Open plan lounge/dining room
- Shaker style fitted kitchen
- Modern family bathroom
- Driveway parking
- Private & enclosed rear garden
- Viewings available upon request



5



1

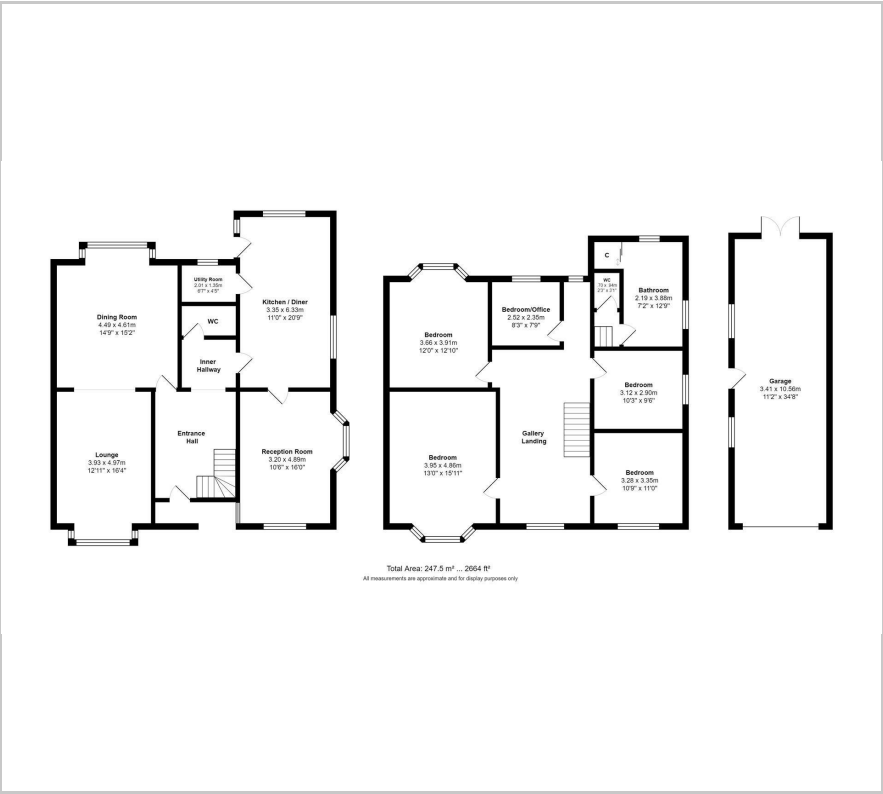


3



D

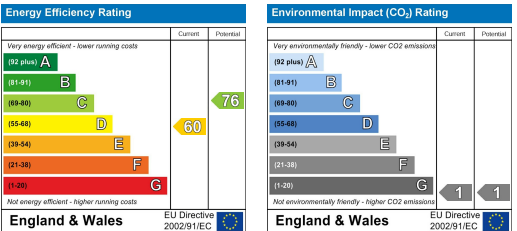
Floor Plan



Area Map



Energy Efficiency Graph



These particulars, whilst believed to be accurate are set out as a general outline only for guidance and do not constitute any part of an offer or contract. Intending purchasers should not rely on them as statements of representation of fact, but must satisfy themselves by inspection or otherwise as to their accuracy. No person in this firms employment has the authority to make or give any representation or warranty in respect of the property.